

# PRH8D28



### FEATURES 特点

- \* Excellent solderability and high heat resistance  
良好的可焊性和高耐热性

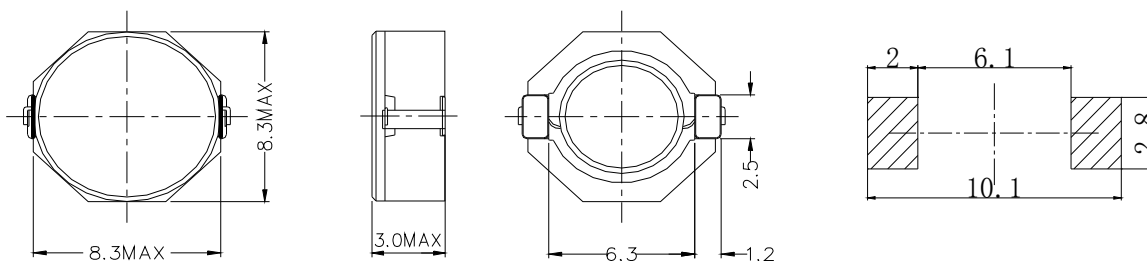
### APPLICATION 用途

- \* DC / DC转换器

### MEASURING FREQUENCY 测试频率

- \* 100KHz 0.3V

### Shapes And Dimensions 外形及尺寸示意图



### Electrical Characteristics 电气性能

Type 型號	Indicate 表示	Inductance 電感值	D.C.R(Max) 直流電阻(m )	Rated Current(Max) 額定電流(A)
PRH8D2 8-2R5	2R5	2.5 $\mu$ H $\pm$ 30%	15.6(12)	4.50
PRH8D2 8-3R3	3R3	3.3 $\mu$ H $\pm$ 30%	18.2(14)	4.00
PRH8D2 8-4R7	4R7	4.7 $\mu$ H $\pm$ 30%	24.7(19)	3.40
PRH8D2 8-7R3	7R3	7.3 $\mu$ H $\pm$ 30%	39.0(30)	2.80
PRH8D2 8-100	100	10 $\mu$ H $\pm$ 30%	47.0(36)	2.50
PRH8D2 8-150	150	15 $\mu$ H $\pm$ 30%	69.0(53)	1.90
PRH8D2 8-220	220	22 $\mu$ H $\pm$ 30%	99.0(76)	1.60
PRH8D2 8-330	330	33 $\mu$ H $\pm$ 30%	156(120)	1.30
PRH8D2 8-470	470	47 $\mu$ H $\pm$ 30%	195(150)	1.15
PRH8D2 8-680	680	68 $\mu$ H $\pm$ 30%	286(220)	0.92
PRH8D2 8-101	101	100 $\mu$ H $\pm$ 30%	430(330)	0.75

\* SPQ:1000PCS/REEL